

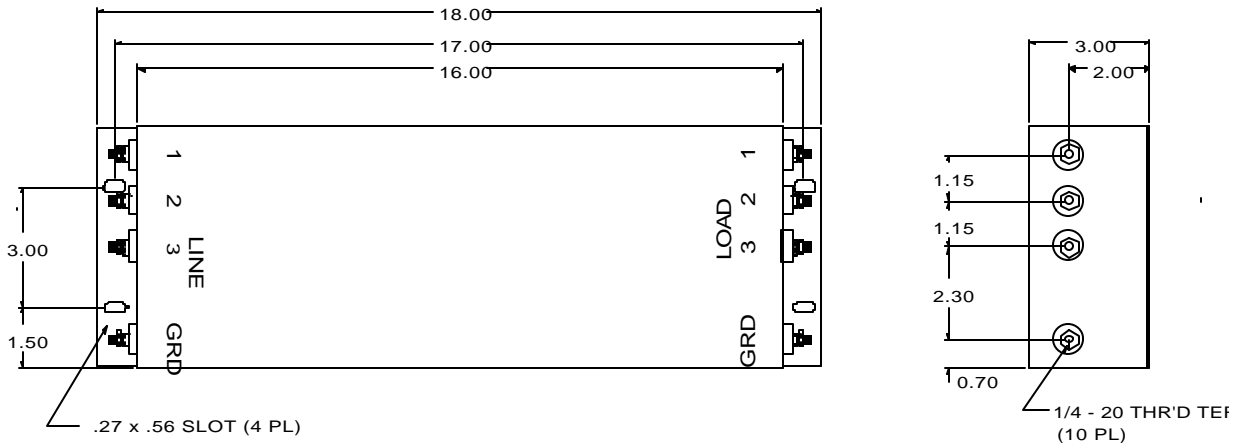
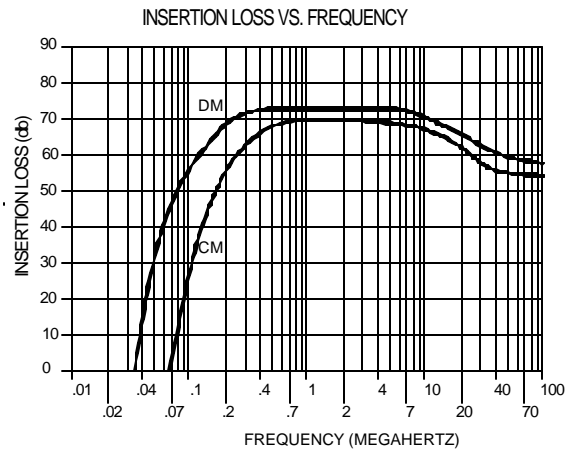
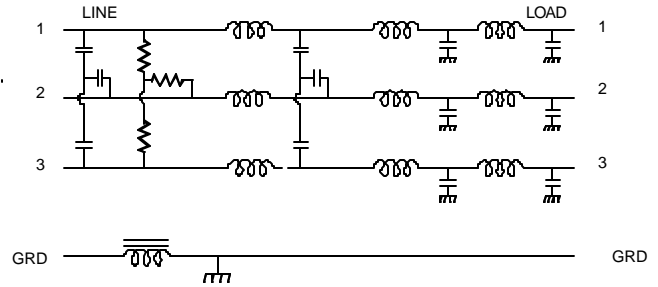


MM-1315-125

Operating Voltage = 250/480 V~, 50 / 60 Hz
 Operating Voltage = 125/208 V~, 50 - 400 Hz
 Operating Current = 125 A / Phase
 Temperature Range = -20 TO 50 Deg. C
 Diel. Withstand (L-CASE) = 1500 V~ FOR 1 MIN.
 Diel. Withstand (L-L) = 2200 Vdc For 1 Min.
 Leakage Current = 18 ma (max) @ 250 V~, 60 Hz
 Discharge Volt after 3.0 second = 20 V Max.
 Maximum Capacitance each line to case = 0.10 uF

Order P/N: MM-1315-125

The Mm-1315-125 filter is designed for use with large computer or motor installations where heavy current is drawn continuously. This filter can handle large in-rush current typical of modern power supplies. When data lines or power is shared with other systems the ground coil helps breakup ground loops which can cause system errors and also increase conducted RF emissions.



USA JMK Inc 15 Caldwell Dr. Amherst, NH 03031 PH: 603 886-4100 FX: 603 886-4115
 email: info@jmkfilters.com
 EUR JMK Ltd Dumbarton G82 2TS Scotland UK PH: 44-(0) 1389-751841 FX: 44-(0) 1389-751841